

<Alps Park>

3

We have Alps Park.
Alps Park has various facilities.
For example, there is a place called The Mountain and Nature Museum. You can learn about Matsumoto's seasonal nature.



【Former Kaichi School】

Former Kaichi School is a national treasure in Japan.
You can enjoy a historical building that combines Japanese and western styles.

Currently closed, scheduled to open in fall 2024
Business hours
AM 9:00 ~ PM 5:00 (enter by 4:30)
Admission fee adult: 400yen
Under 15 years old: 200yen



7

【Furusato】

Welcome to Matsumoto.
We have Furusato, Taiyaki restaurant.



11



You can eat many kinds of Taiyaki.
It costs 250 yen ~ 270yen.
It is very delicious.
Please visit Furusato.

【Matsumoto Mingeikagu】

Welcome to Matsumoto!
Matsumoto Mingeikagu in Nakamachi Street displays traditional craft furnitures, tablewares and more.
You can also buy them.
Please go and try it!

Business hours 9:30~18:00
Regular holiday : No holidays
Walk from Matsumoto Station Approximately 39 minutes



15

【Nawate -Dori】

Welcome to Matsumoto.
There are various shops in this street.
You can eat while walking.
You can buy souvenirs.
Please visit Nawate -Dori.



4

【Maeyao】

We have Maeyao.
You can eat different tastes of curry.
They are very delicious.
You can walk here or come by bus from Matsumoto castle.
Please eat Maeyao curry.



8



【Matsumoto City Museum of Art】

Welcome to Matsumoto.
We have Matsumoto City Museum of Art.
At the museum, you can see works related to Matsumoto City.
There is also a museum shop, so you can easily stop by.

12

【Agatanomori Park】

Welcome to Matsumoto.
In Matsumoto, we have Agatanomori Park.
We can see pond creatures.
You can let your children play with the playground equipments in the park.
The scenery in the park is beautiful. If you have children, please bring them.
So be sure to check it out when you have time!



5

【Matsumoto City Museum of Art】

In Matsumoto, we have Matsumoto City Museum of Art.
This museum displays a variety of works.
The works change depending on the season.

9

OPEN : 9 : 00 to 17 : 00
Admission fee
Adult: 410 yen
High School and University students: 200 yen
Child up to 15 years old: free admission

Matsumoto City Museum of Art
PHONE NUMBER
0263
-39
-7400

TRAIN 12 min walk from Matsumoto Station
BUS Take the Town Sneaker Bus to the Matsumoto Bijutsukan (Matsumoto of Art) Bus Stop

【Matsumoto City Museum of Art】

You can see many paintings and works at the Matsumoto City Museum of Art.
They are very beautiful.

13

Distance from Matsumoto Castle to Matsumoto City Museum of Art
On foot : 30minutes
By car : 10 minutes

telephone number : 0263-39-7400

Matsumoto City Museum of Art is open from 9:00 to 17:00.

【Yohashira jinja】

We have Yohashira jinja.
You can worship Japanese gods.
This old shrine is beautiful.
You can enjoy "Omikuji" that tells your fortune like a fortune cookie.

17



【Matsumoto Educational and Cultural Center】

From Harizuka Tumulus, we can go there on foot.
We can enjoy rock-scissors-paper game with a robot.
We can see a very beautiful starry sky in a planetarium.



6

Matsumoto Jujo

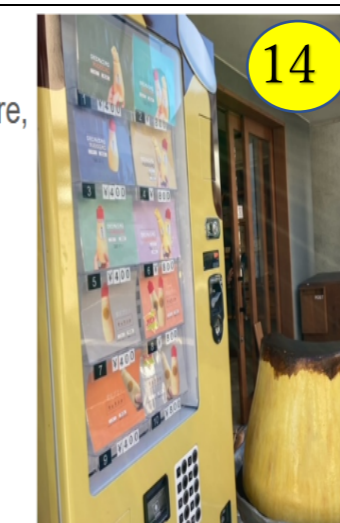
We have "Matsumoto Jujo."
This place is used as a public bath (hot spring).
We can read books, too.
We can enjoy the old atmosphere.
It is fantastic!



10

【Haru.Natsu.Aki.Fuyu】

We have a special pudding store, "Haru Natsu Aki Fuyu."
You can eat delicious pudding from 270 yen.
My recommendations are the drinkable pudding and the caramel-flavored pudding.
Original caramel fudge is also available for purchase.



14

【Yazawa Taiyaki Store】

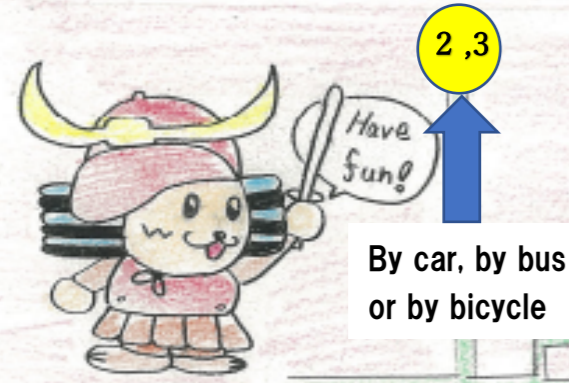
Welcome to Matsumoto.
I want to introduce you "Yazawa Taiyaki Store".
It is located in Nawate Street.



As its name suggests, this store serves delicious taiyaki.
It contains chocolate and custard.
Please come to Yazawa Taiyaki Store.

18

Welcome to Matsumoto!



2,3
By car, by bus
or by bicycle

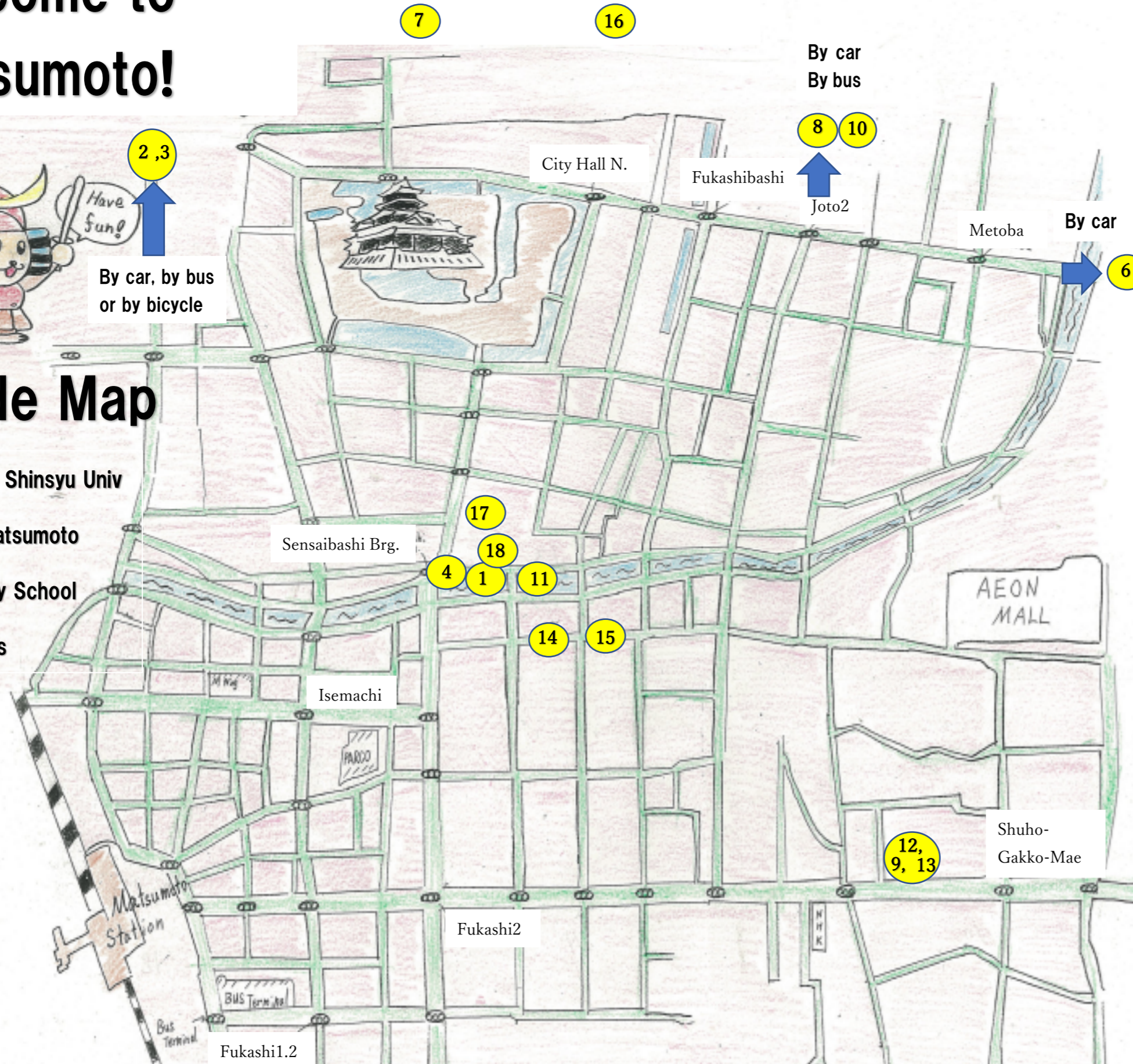
Guide Map

Written by Shinsyu Univ

Fuzoku Matsumoto

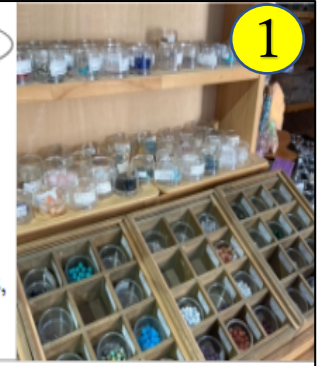
Elementary School

6th graders



gahoujin Please go and check it out!

gahoujin is a shop that sells power stones. At gahoujin, you can choose your favorite stone, design, and ways of wearing and have your one-of-a-kind accessory. You can also choose and buy bracelets, keychains, charms, earrings, pendants, and more.



Address
Nawate Street, 3-3 Ote, Matsumoto City,
Nagano Prefecture, 390-0874

Regular holiday	Business hours
Monday	10:30-17:00



[Alps Park]

Alps Park has large playground equipments. There are also zoos that you can enter for free. There is also a coaster that you can ride for 410 yen for adults and 200 yen for children. You can go on foot, by bicycle or by bus. Please come to Alps Park.



Please tell us about what you thought of our brochure and the place you went after reading our brochure. Please enter from here.

5

